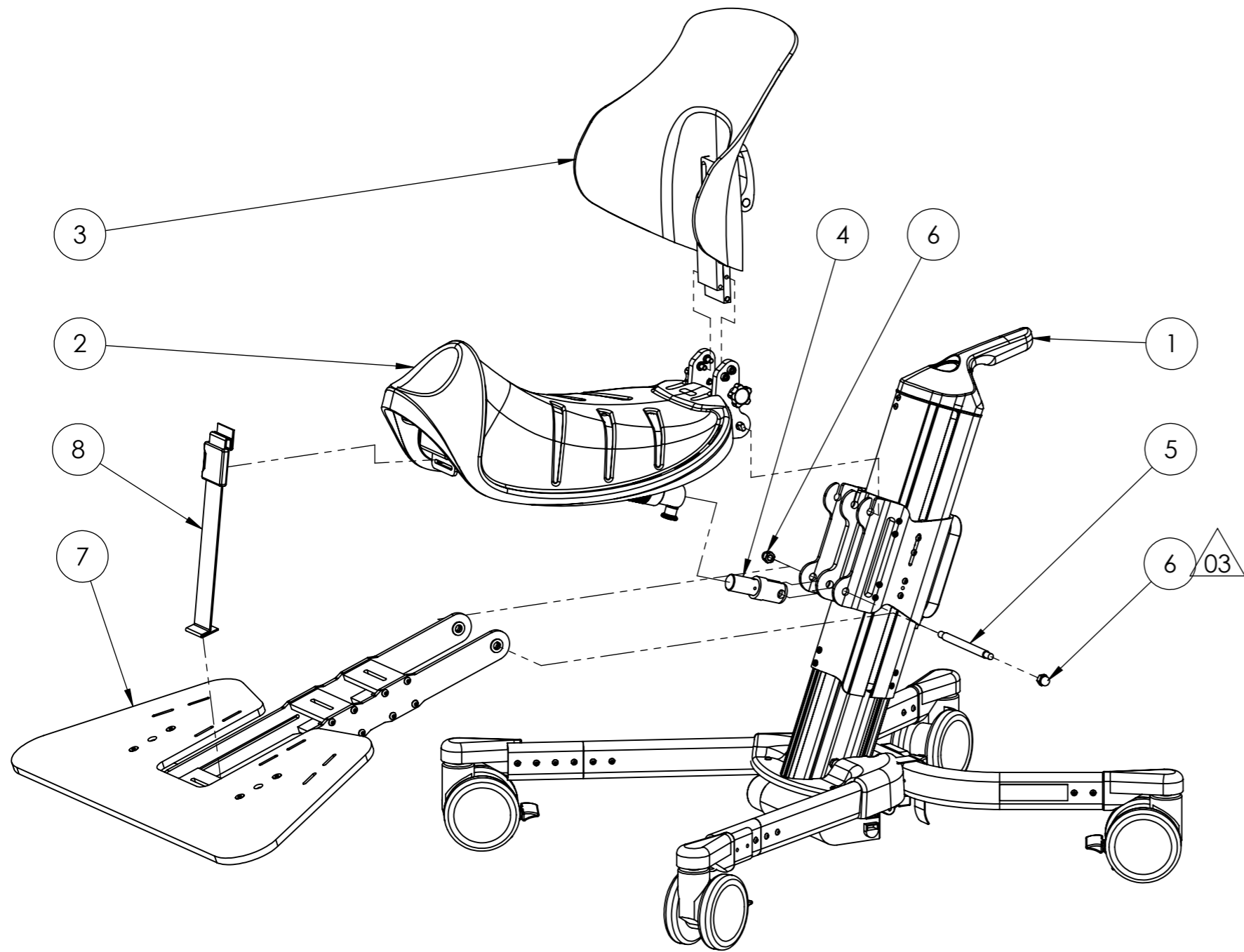


REV.	DESCRIPTION	DATE	APPROVED
00	Established	24.08.2017	
01	Fastener (Item 7) updated	06.11.2017	
02	Item 2 exchanged	02.01.2018	
03	Item 6: Qty. changed to 2	21.11.2019	



ITEM NO.	PART NUMBER	Title	QTY.
1	300-1129	Undercarriage, complete - Size 2, Electric	1
2	300-3007	Krabat Jockey, Seat, complete, size 2	1
3	900-1135	Backrest, high, complete, size 2	1
4	300-2022	Fitting end	1
5	300-2027	Secondary Bolt	1
6	DIN 1587 - M8 --NNU - St - 10.9 - EZ		2
7	300-1135	Common Footrest sz 2 complete	1
8	300-3032	Strap, Foot rest	1

UNLESS OTHERWISE SPECIFIED:			
ALL DIMENSIONS ARE IN MILLIMETERS	TOLERANCES, LINEAR/ ANGULAR: NS-ISO 2768-1-m-K	DEBUR AND BREAK SHARP EDGES	PAPER SIZE: A3
		MATERIAL:	TITLE: KJ, complete, size 2, Electric
		TREATMENT:	
NAME	SIGNATURE	DATE	DWG NO. 300-5002
DRAWN A.S.		24.08.17	REVISION 03
CHK'D			
APP'VD			
WEIGHT:		SHEET 1 OF 1 SCALE:1:7 DO NOT SCALE DRAWING	